



Roseville Area Schools

Quality Teaching & Learning for All...Equity in All We Do

Elevating Student Voice to Dismantle White Supremacy- It's Power, Structure and Culture

November 15, 2019

**Youssef Abdallah ,Meshe Ford, Talia McWright, Serenity Primus,
Jose Urrutia and Many More Students; Kitty Gogins and Jamey Johnson**

Agenda

- Welcoming and Interactive Questions
- Who Are We? LIT Program
- Overview of District, Equity Journey and How Student Voice has Impacted District
- What There is that Doesn't Love a Racial WALL (Spoken Word)
- Targeting People (Spoke Word)
- Personal Testimonies: Students Experiences at the Racial WALL with White Supremacy
- The Challenge and The Call: Racial Reconciliation
- Spoon Conversations (Small Group Questions)
- Community Circle

Roseville Area Schools Background

- Medium-sized inner ring suburban school district



- Continually grows more diverse
- Equity Journey began in 2005 with an equity vision

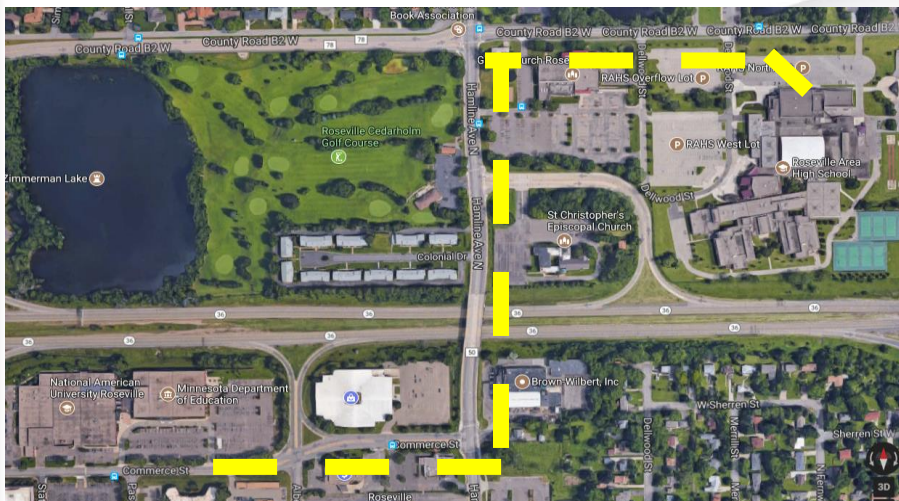
Equity Vision Guides Our Work

Roseville Area Schools is committed to ensuring an equitable and respectful educational experience for every student, family and staff member regardless of:

- Race
- Gender
- Gender Identity
- Sexual Orientation
- Socioeconomic Status
- Age
- Ability
- Home or First Language
- Religion
- National Origin
- Physical Appearance

Students Galvanized Action

November 18, 2016



We want our voices heard, not only in the schools but within our communities.... We want a more diverse curriculum, where we are able to learn more about different leaders of color and their achievement. Not only in history class, but in our English, Math, Science and Fine Arts

Examples of Student Voice Impact on Power, Structure and Culture

- Galvanized establishing district priority on Absent Narratives and Equity Curriculum-Instruction Compass implementation
- Some shifting of classroom power from teachers to students, e.g. increased student choice in assignments and more co-creation of curriculum
- Increased student partnership opportunities, e.g. interview teams, school handbook reviews, defining/creating desired school culture
- Conducting staff and board education; and hosting community conversations

Examples of Student Voice Impact on Power, Structure and Culture

- Representing Roseville Area Schools outside the district, e.g. MDE, ReImagine MN, MN Community Ed Conference



Leaders In Training

